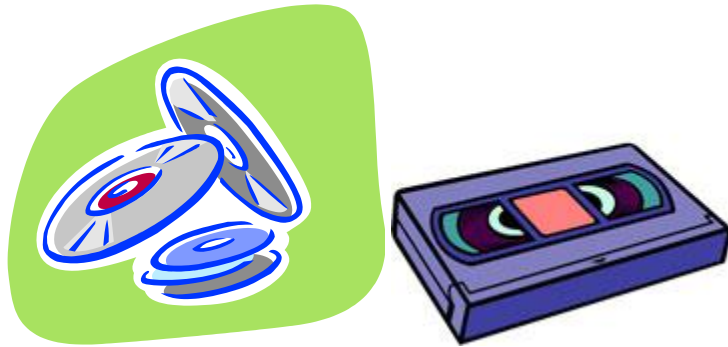


## Table of Contents

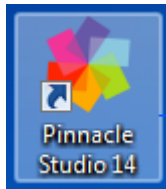
Importing video with Pinnacle Studio .....	2
Setting up Pinnacle Studio for importing .....	3
Choosing format settings for your video .....	3
Setting the file save folder .....	6
Capturing the video source .....	7
Saving your video .....	8
<b>Save your file and cleanup !!!!</b> .....	<b>11</b>

## Importing Video with Pinnacle Studio:

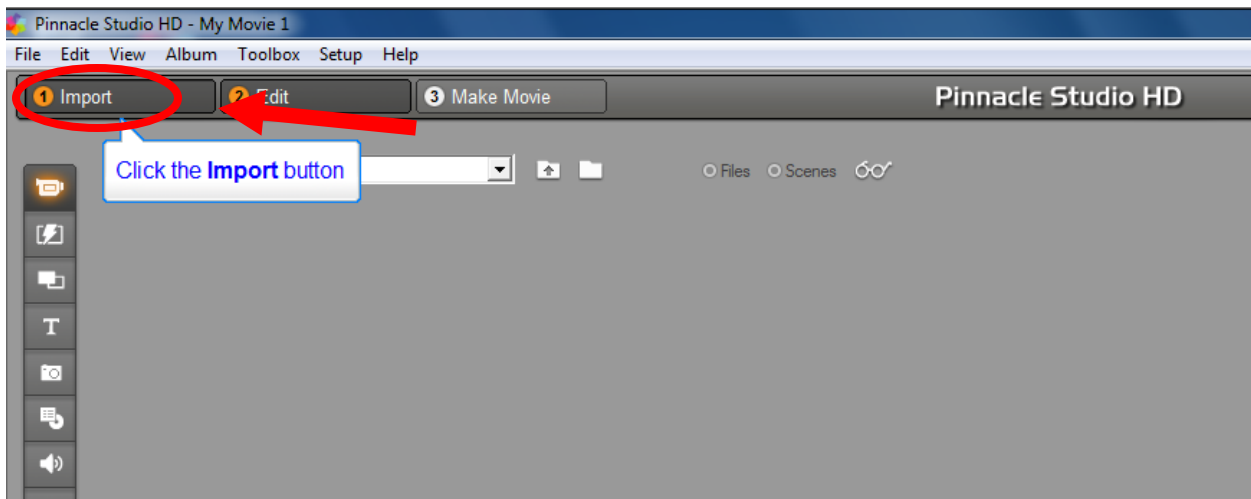
Put your **VHS Tape** or **DVD** in the player to the left of the computer.



Click the **Pinnacle Studio 14** shortcut on the desktop to launch the software.

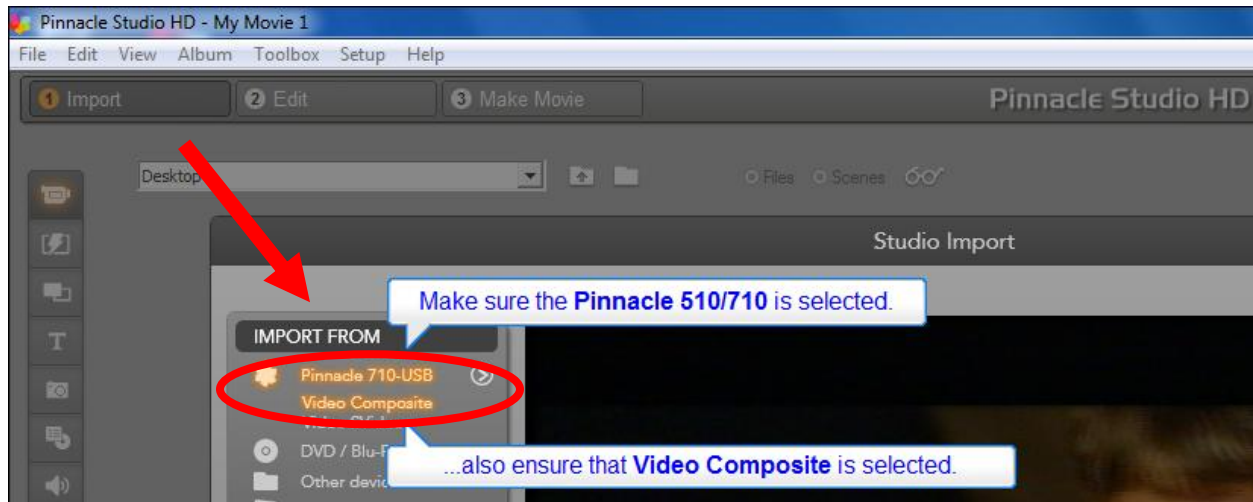


Click on the **“Import”** button under the menu bar.



## Setting up Pinnacle Studio for importing:

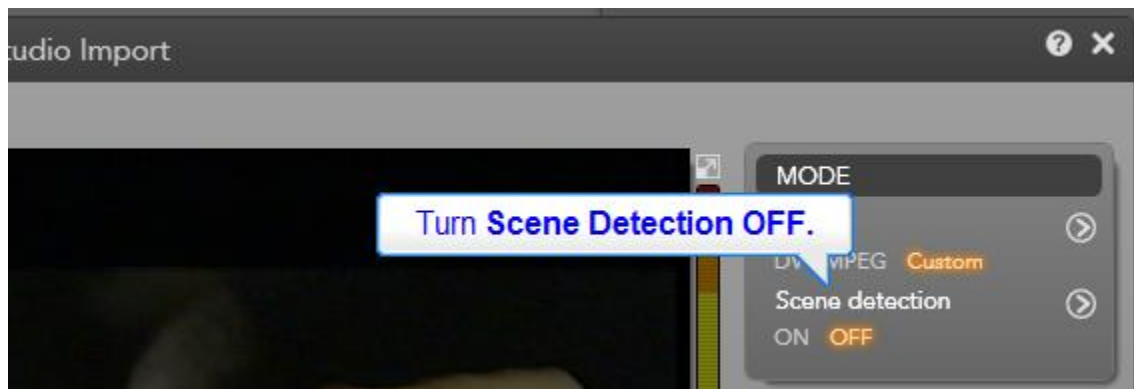
Locate the “**IMPORT FROM**” section of the Studio Import window (on left) and click on “**Pinnacle 710/510 USB**” to make sure it is selected. Also click on “**Video Composite**” to make sure it is selected for regular VHS/DVD video capture.



\*Note: Select “**S-Video**” from **IMPORT FROM** if importing using an **S-Video** cable. Select “**Other Devices**” if importing directly from a **Camcorder** through **Firewire**.

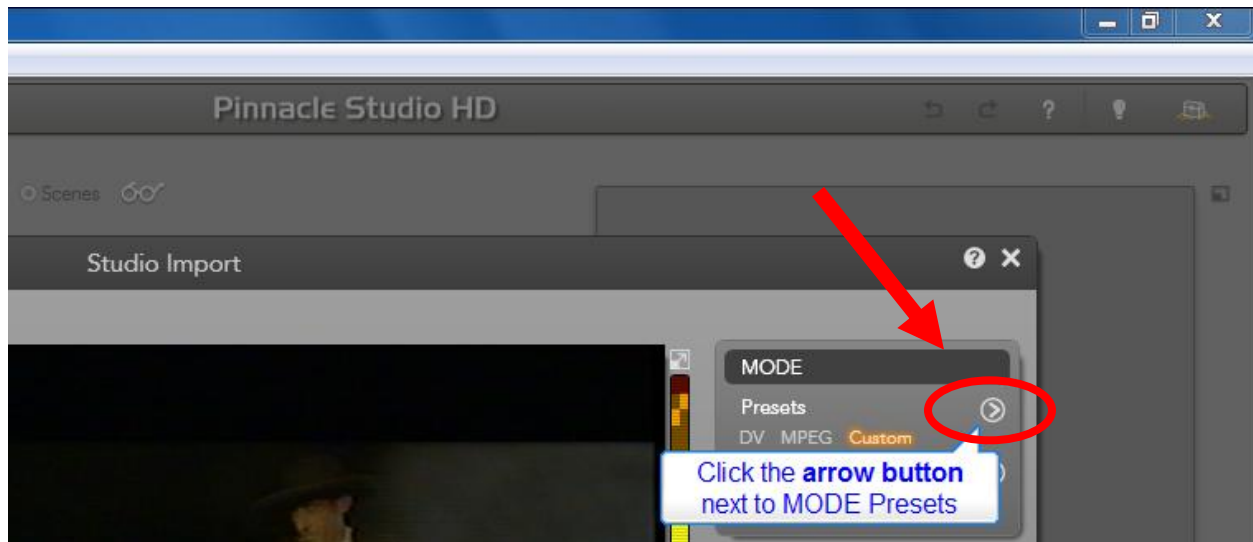
## Choosing format settings for your video:

Locate the “**MODE**” section of the Studio Import window (on the right) and for the **Scene Detection** setting, click on **OFF**.



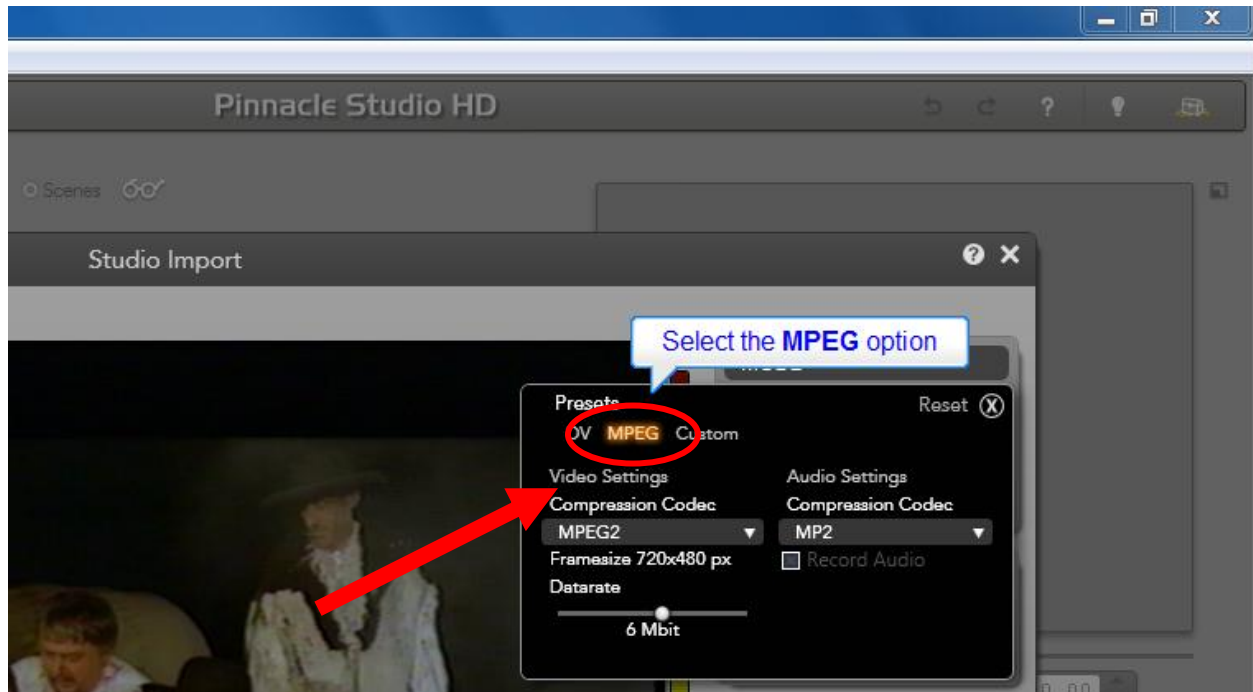
## Choosing format settings for your video:

Locate the “MODE” section of the Studio Import window (on the right) and then click on the “Presets” arrow button on the right to expand the options.



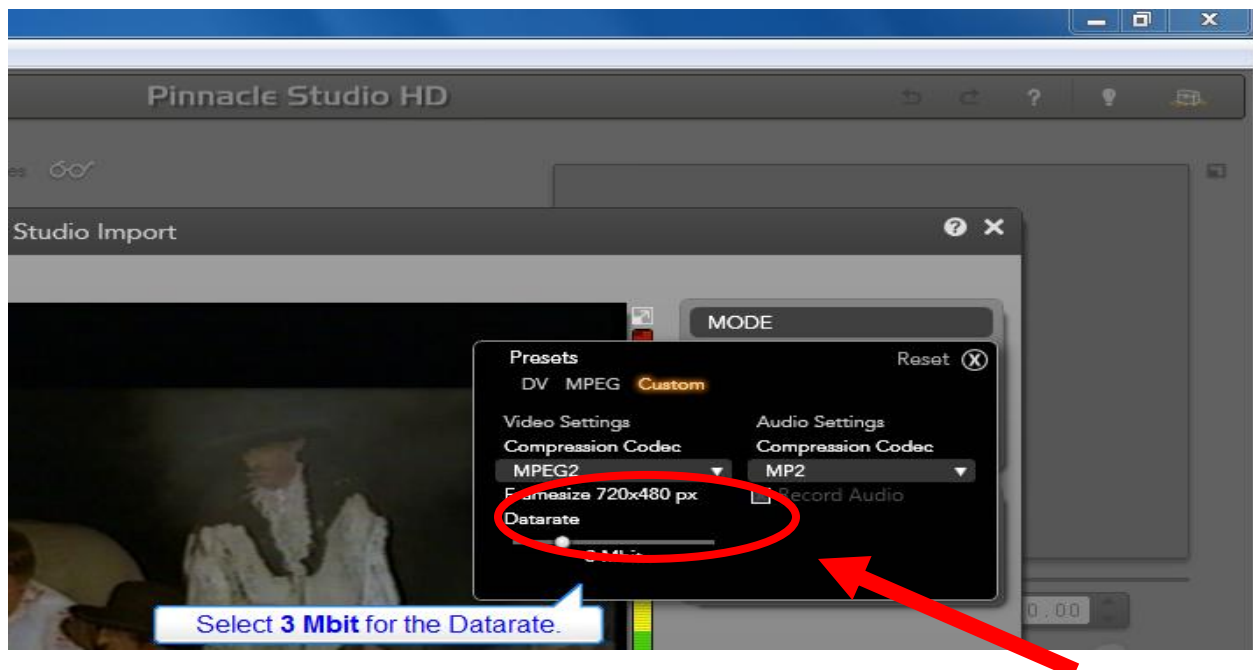
## Choosing format settings for your video:

Click the “MPEG” option at the top of the Presets window.



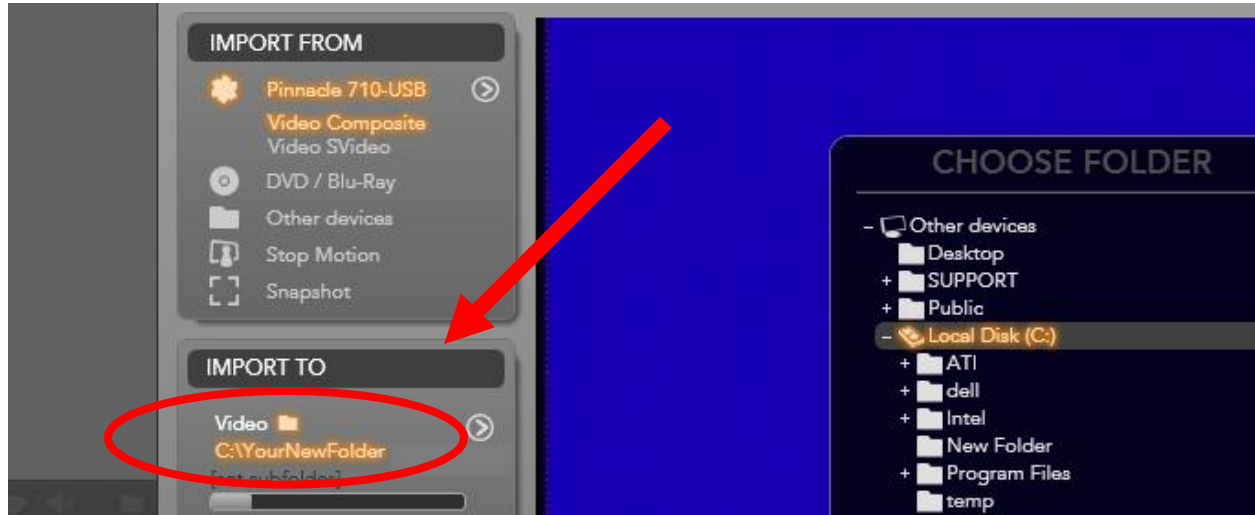
## Choosing format settings for your video (video datarate):

Move the Datarate slider to “3Mbit”. This setting is best for use when importing from DVD or VHS. ***Contact SHRS IT Support before choosing a higher datarate!!***

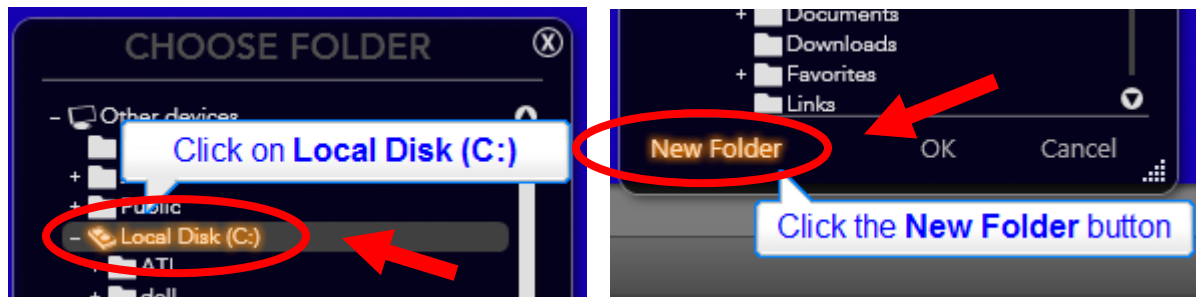


## Setting the file save folder:

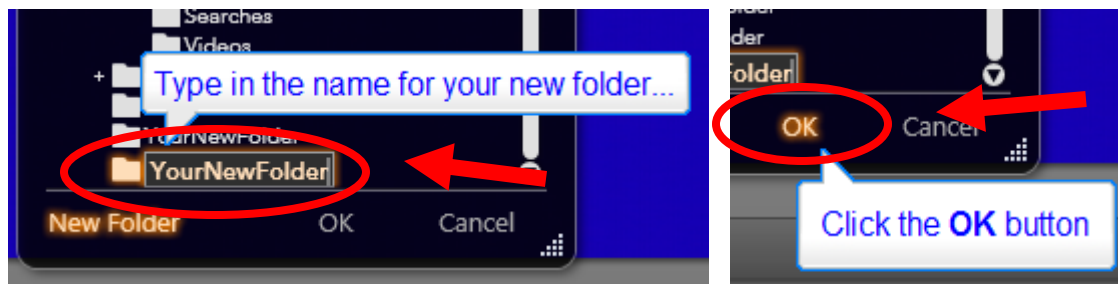
Locate the IMPORT TO section of the Studio import window (lower left) and click on the small folder icon directly next to the word "Video".



Click on "Local Disk (C:)" then click on the "New Folder" button.

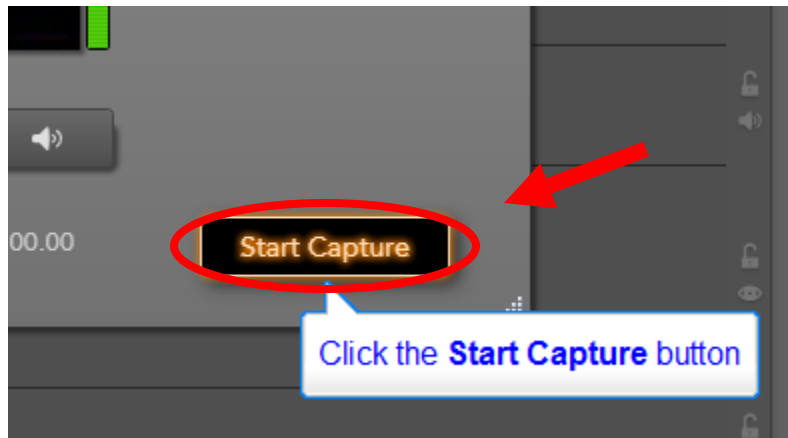


Then type in the name for your new folder and click on the "OK" button.



## Capturing the video source:

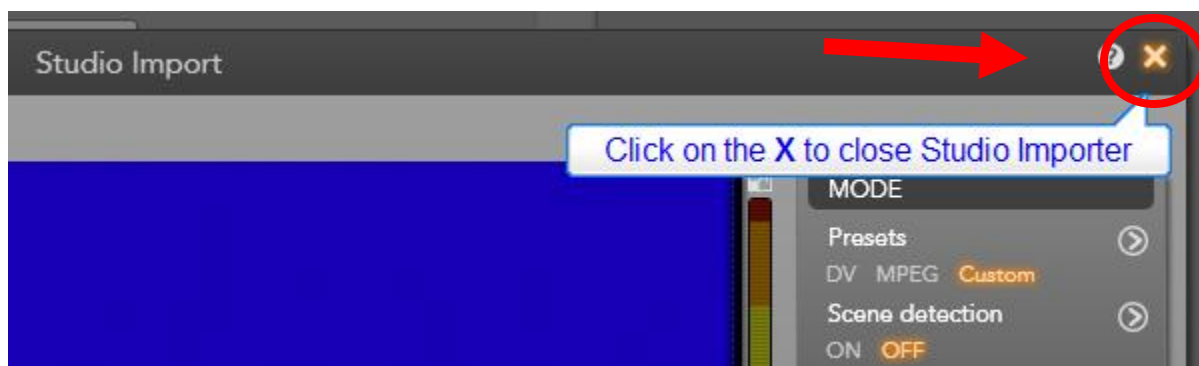
Press play on your VHS or DVD. The Studio Import preview window should now display your video. Cue up your video to the point you want to begin capturing at and now click on the “**Start Capture**” button.



Your video will be captured in real time as it plays. When your recording is done, click on the “**Stop Capture**” button.

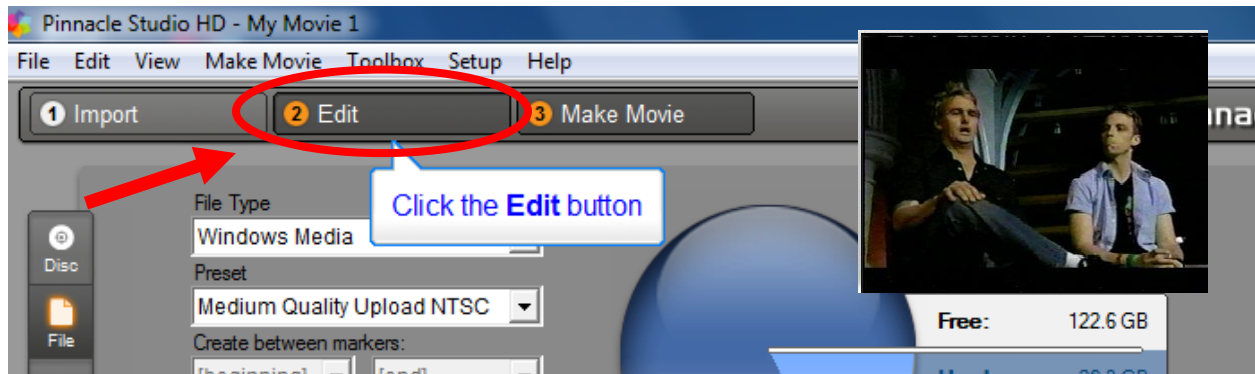


Now click on the “**X**” button to close the Studio Importer.



## Saving your video:

Pinnacle Studio will now move into the Edit mode. If it does not, just click on the “**Edit**” button under the menu bar.



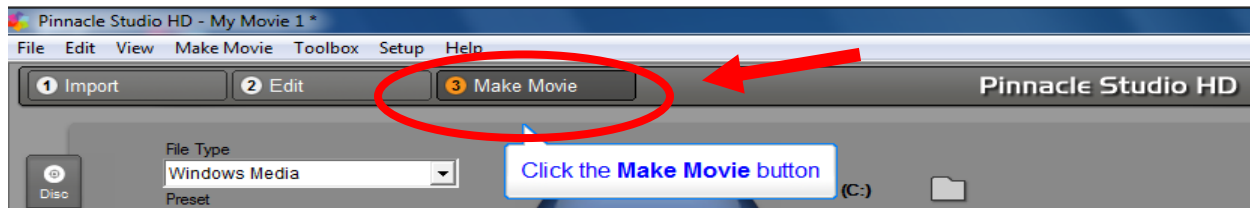
Now click and hold on the video capture you just created and then drag in to the filmstrip at the bottom of the window (multiple captures can be added here).





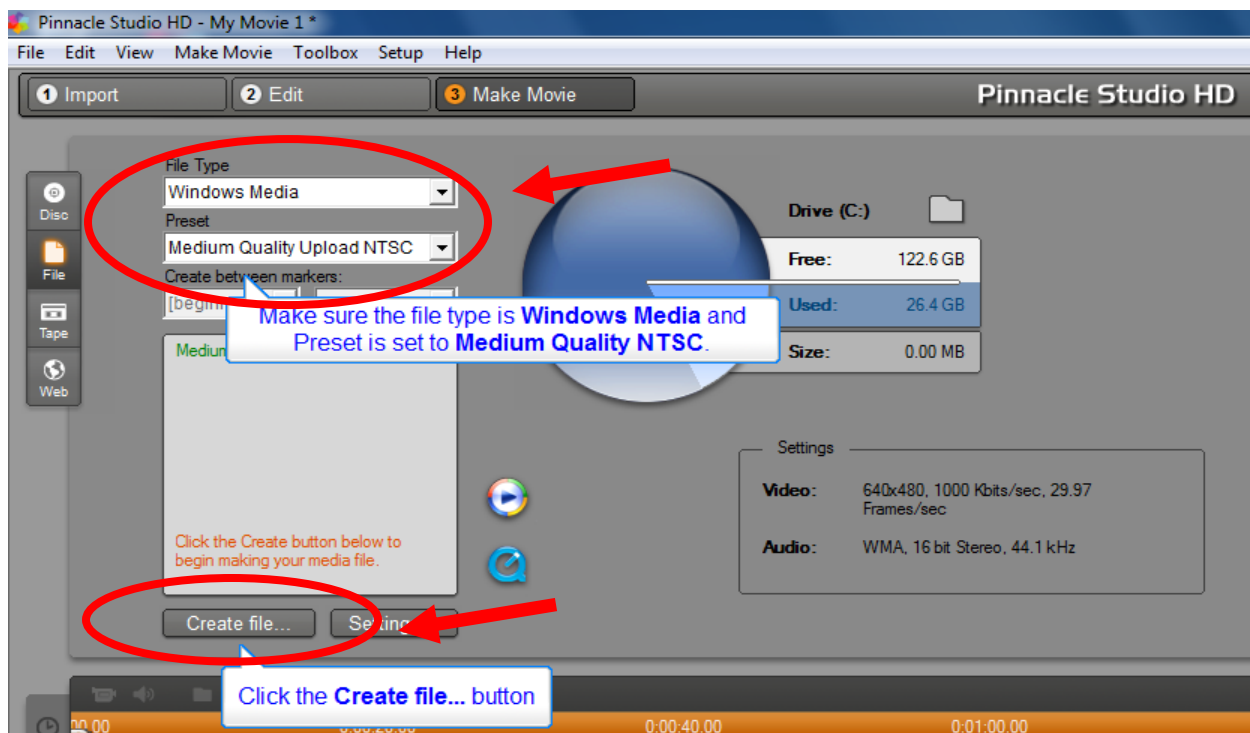
## Saving your video:

Then click on the “**Make Movie**” button under the menu bar.



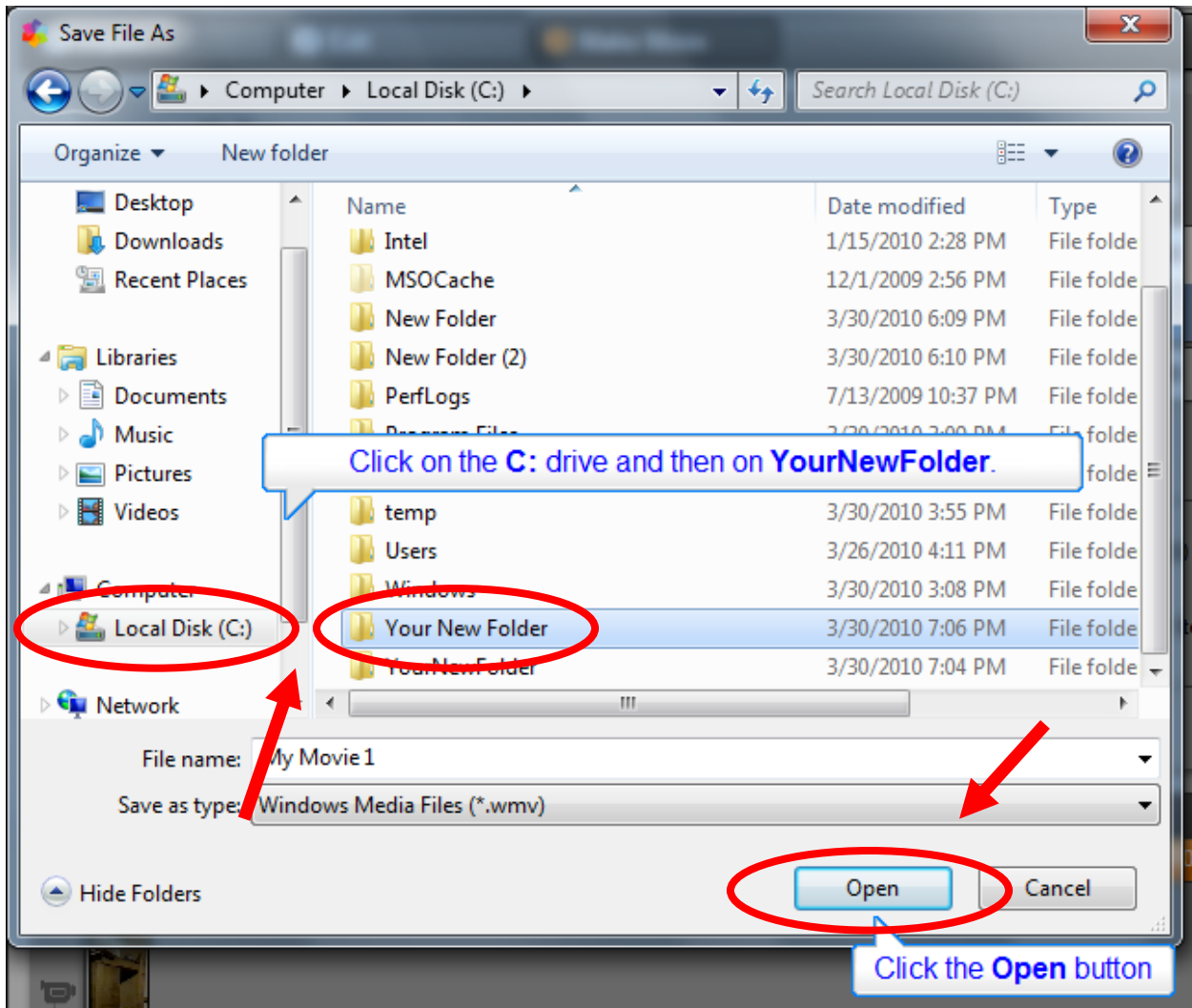
In the Make Movie window, make sure that the **File Type** is set to **Windows Media** and that the **Preset** is set to **Medium Quality NTSC**, then click the “**Create File**” button.

***Contact SHRS IT Support before choosing a higher quality preset!!***



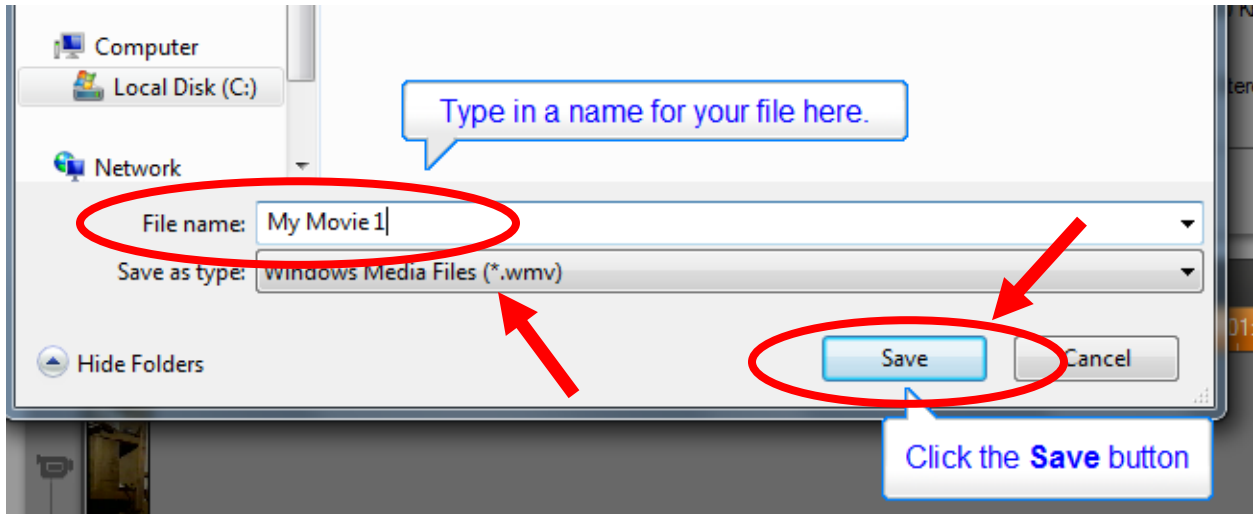
## Saving your video:

Now click on the **C:** drive, then click on **YourNewFolder**, and then click on the **“Open”** button.



## Saving your video:

Finally, type a name in for your file to be saved as and then click on the “**Save**” button.



Once the file is done being made and saved you can shutdown Pinnacle Studio and locate your file under **C:\YourNewFolder**. Your file should play in Windows Media Player for viewing.

**Be sure you save your file to an external USB**

**drive or burn it to a disc once you are done !**

**After you have saved a copy of your file, delete**

**any files left in the C:\YourNewFolder directory.**