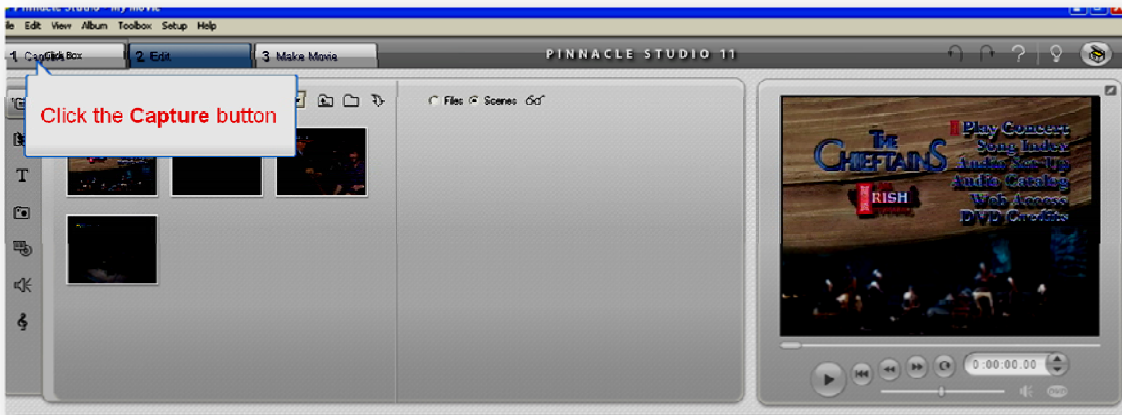


## Watching Video on LRC AV Machines

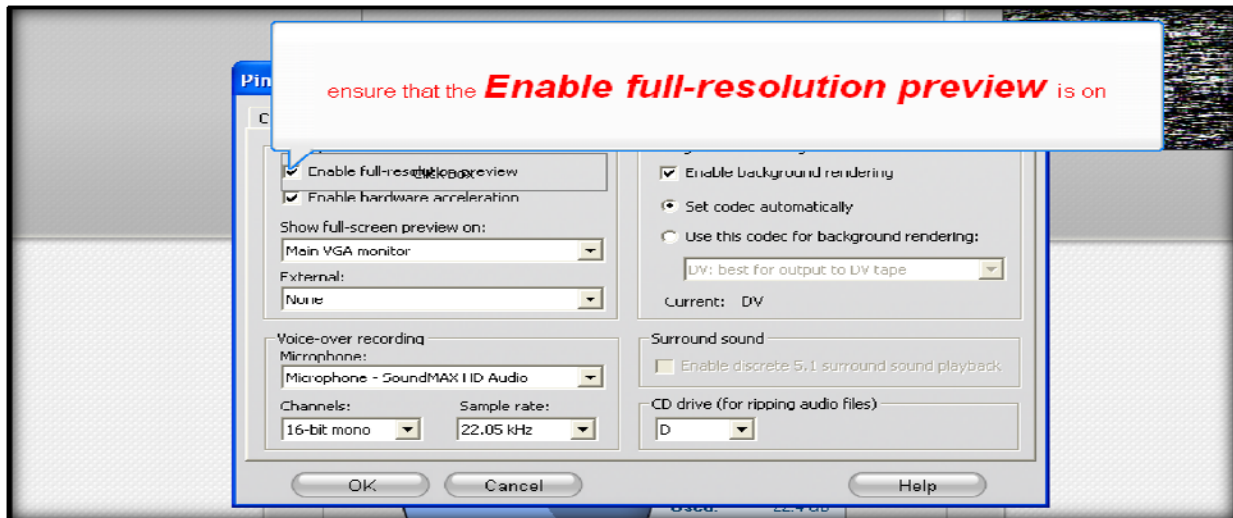
### Tutorial 1 – Watching a VHS Tape



1. Open **Pinnacle**: double click on the **Studio Launcher** icon.
2. Insert your VHS Tape into the VHS Player
3. Ensure you are in the **Capture Tab** in Pinnacle



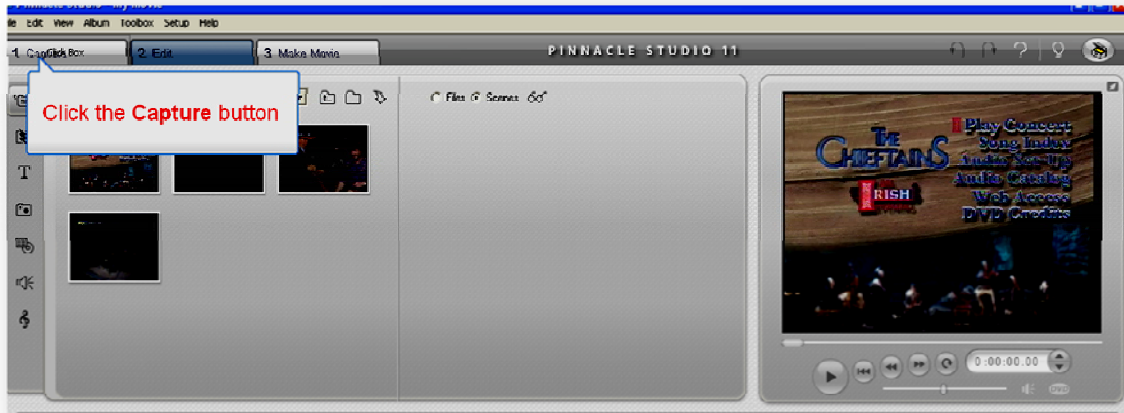
4. Click the "**Settings...**" button (next to the green "Start Capture" button).
5. In the Pinnacle Studio Setup Options choose Video and Audio Preferences Tab.
6. Select the check box next to "**Enable Full Resolution Preview.**"



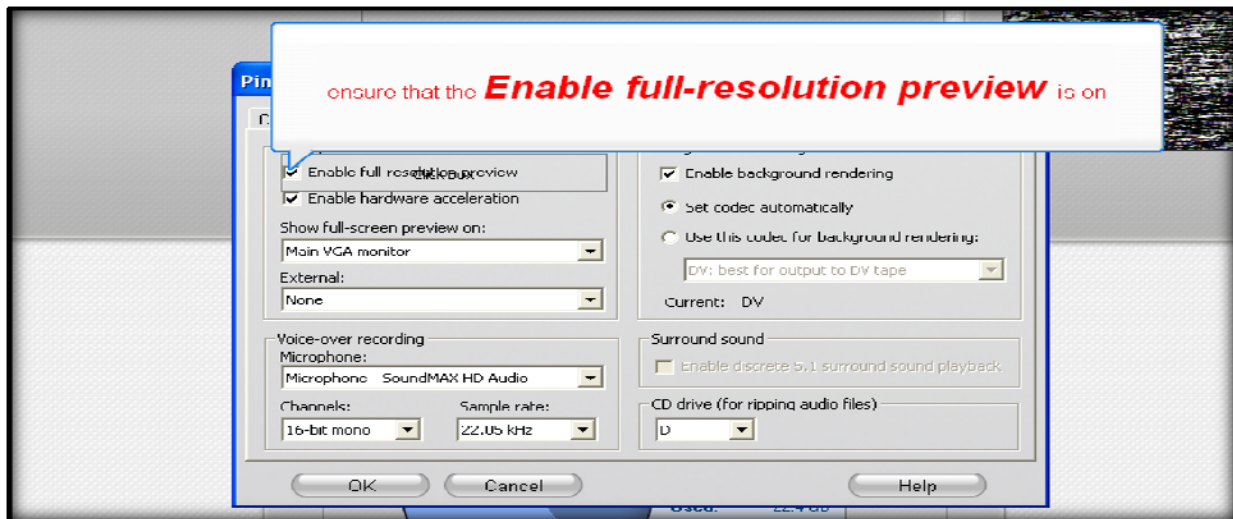
7. Press Play on the VHS Player, you can watch your video play in the upper right.

## Tutorial 2 – Watching a DVD Video

1. Open **Pinnacle**: double click on the **Studio Launcher** icon.
2. Insert DVD Video into the DVD Player.
3. Insert your VHS Tape into the VHS Player
4. Ensure you are in the **Capture Tab** in Pinnacle



5. Click the "**Settings...**" button (next to the **green** "Start Capture" button).
6. In the Pinnacle Studio Setup Options choose Video and Audio Preferences Tab.
7. Select the check box next to "**Enable Full Resolution Preview.**"



8. Press Play on the DVD Player, you can watch your video play in the upper right.